

SALES PROGRAM



**THE NEW GOALS IN PRODUCTIVITY,
RELIABILITY AND ACCURACY**

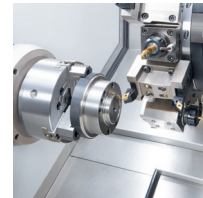
**THE SIMPLEST AND MOST COST-EFFECTIVE SOLUTIONS
IN TURNING AND MILLING**



SALES PROGRAM

CNC TURNING CENTRES

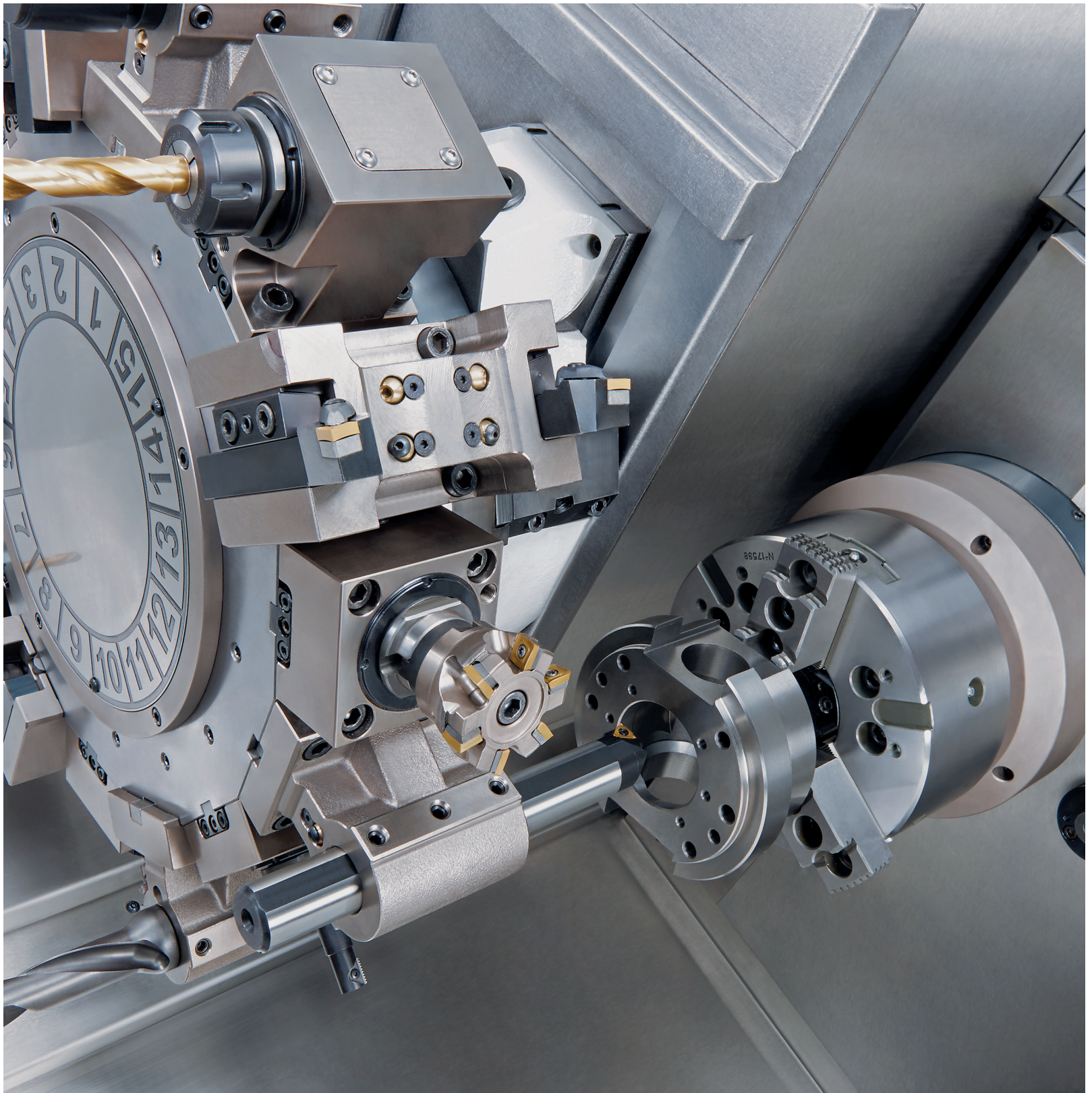
BAR TURNING



PAGE 05



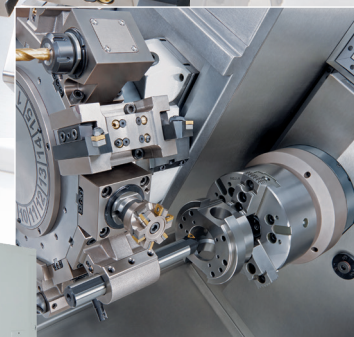
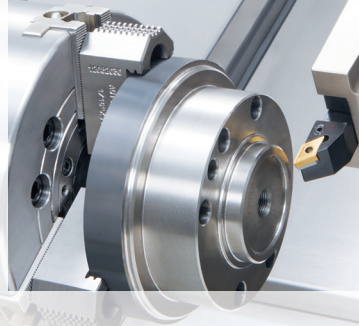
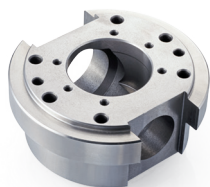
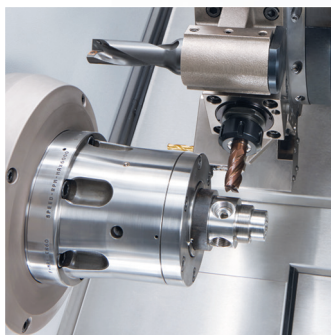
PAGE 10





CNC TURNING CENTRES

The new B620 is the latest development of Biglia in the field of universal turning centres for bar and chuck machining. The modular concept and the high versatile options provide a wide spectrum of machining possibilities ranging from universal turning to complete machining of complex parts thanks to the CNC automatic tailstock, second spindle, rotary tools, spindle C-axis and Y-axis. The B620 is available in five versions with bar capacity 51, 70 or 80 mm.

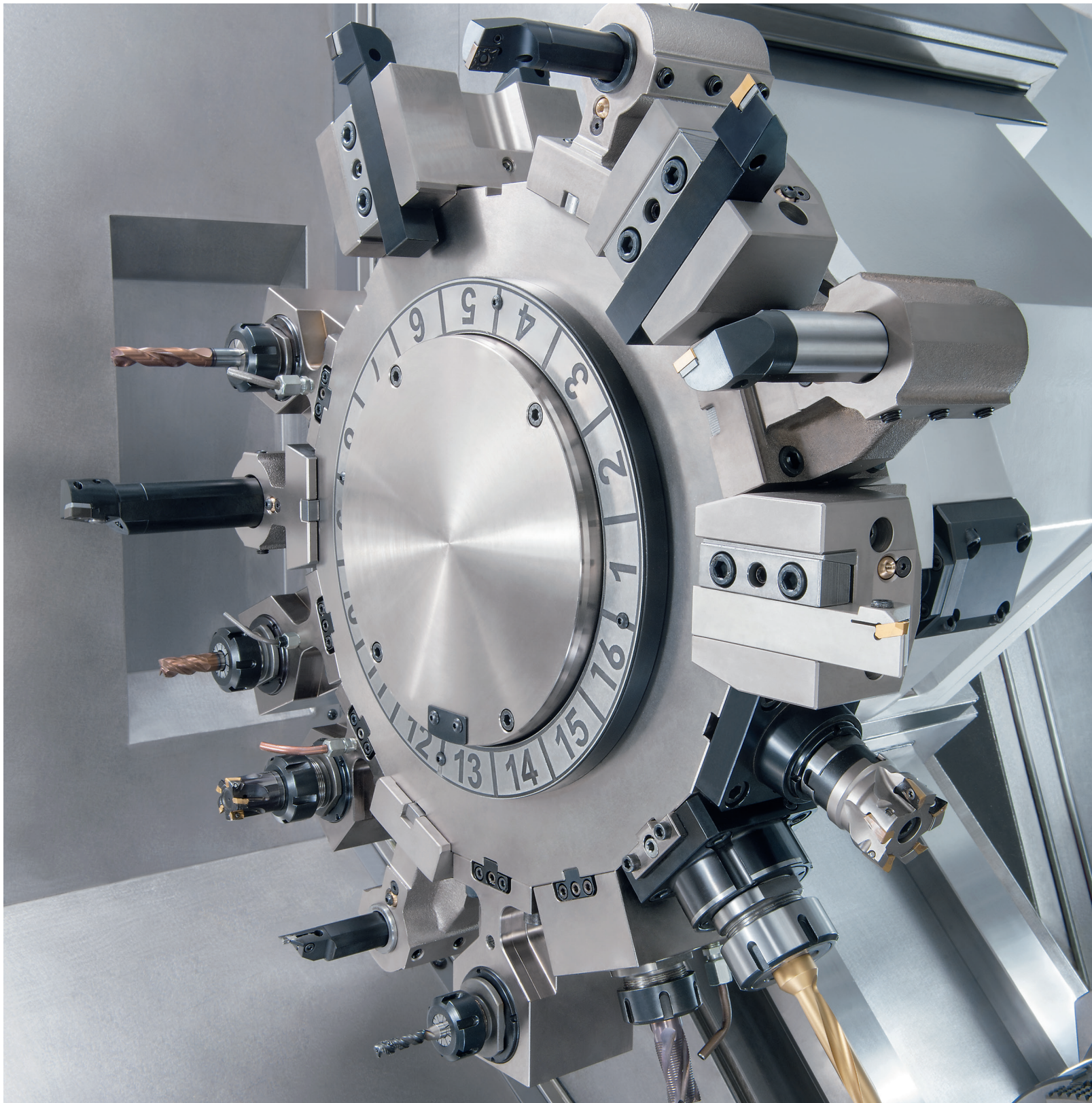


AVAILABLE VERSIONS

B620	"Standard" model, equipped with tailstock
B620M	Rotary tools and C-axis
B620SM	Rotary tools, C-axis and sub-spindle
B620Y	Y-axis, rotary tools and C-axis
B620YS	All the advantages provided by the Y-axis and the sub-spindle

TECHNICAL SPECIFICATIONS		B620 ASA5/ASA6/ASA8
Max. bar capacity	mm	51/70/80
Max. machining diameter	mm	250/360/360
Max. machining length	mm	620/620/620
Y-axis travel	mm	90/90/90
Main spindle: rotation speed		5000/4500/3200
Chuck diameter	mm	165-210/210-250/210-250
Motor power (50%)	kW	17-25/30-40/15-22
Sub-spindle: rotation speed	rpm	5000
Chuck diameter	mm	140-165
Motor power (50%)	kW	17-25
Number of tool stations		15
Live tools: speedrate	rpm	6000
Live tools: motor power	kW	11-13
Weight incl. swarf conveyor	kg	6500/6650/6700
Machine dimensions	cm	455,1x206,5x204,2h







CNC TURNING CENTRES

The series B750 represents the “state of the art” of multifunction turning centres.

The heart of this range of machines is represented by:

- The massive rigid cast-iron machine-bed and the flat hardened and ground slide-ways on all axes;
- The fast indexing, sturdy Biglia servo-turret with the rotary motion being transmitted by the built-in motor (17 kW), integrated in the tool plate, directly to the rotary tool;
- The integral motor-spindles driven by powerful (22 to 38 kW) and high torque (286 to 1014 Nm) motors



AVAILABLE VERSIONS

B750	“Standard” model, equipped with tailstock
B750M	Live tools and C-axis
B750SM	Live tools, C-axis and sub-spindle
B750Y	Y-axis, live tools and C-axis
B750YS	All the advantages provided by the Y-axis and the sub-spindle

TECHNICAL SPECIFICATIONS

B750

Max. bar capacity	mm	70/80/93-100
Max. machining diameter	mm	350/450/552
Max. machining length	mm	765
Y-axis travel	mm	140
Main spindle: rotation speed	rpm	4500/3200/3000
Chuck diameter	mm	250/315/400
Motor power (50%)	kW	40/22/38
Sub-spindle: rotation speed	rpm	5000/4500
Chuck diameter	mm	140/165/210/250
Motor power (50%)	kW	25/40
Number of tool stations		12/16 (12/16 all driven)
Live tools: speedrate	rpm	6000
Live tools: motor power	kW	17,5
Weight incl. swarf conveyor	kg	7600
Machine dimensions	cm	507x203x222h

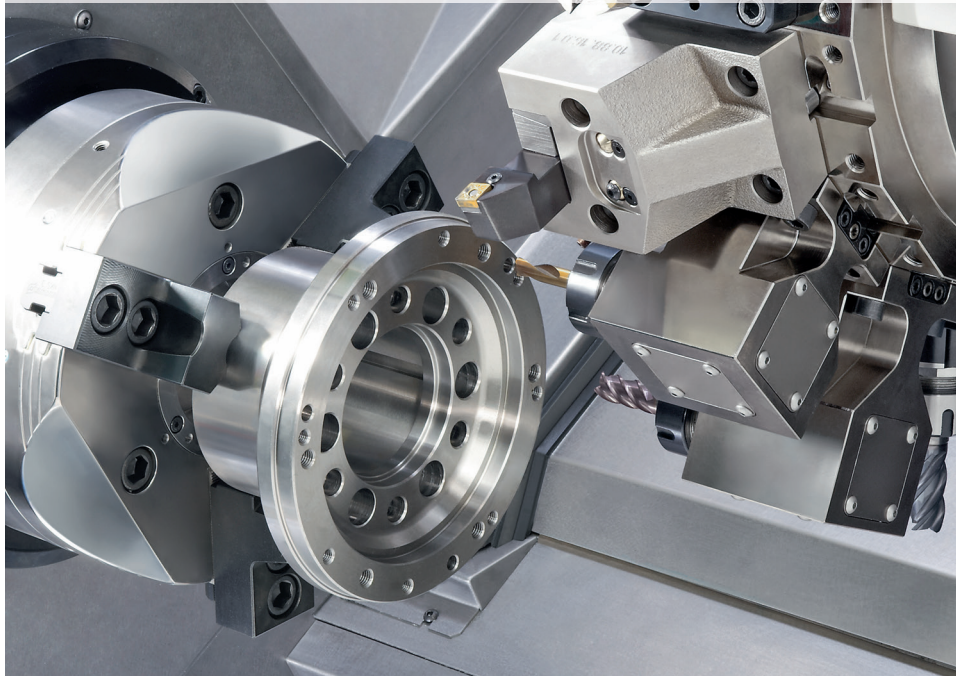




B1250

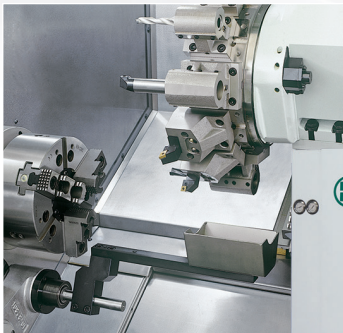
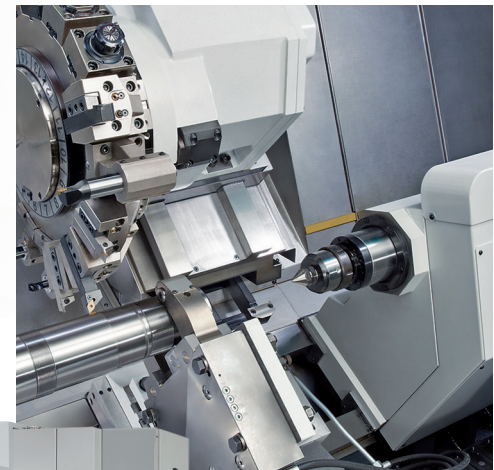
CNC TURNING CENTRES

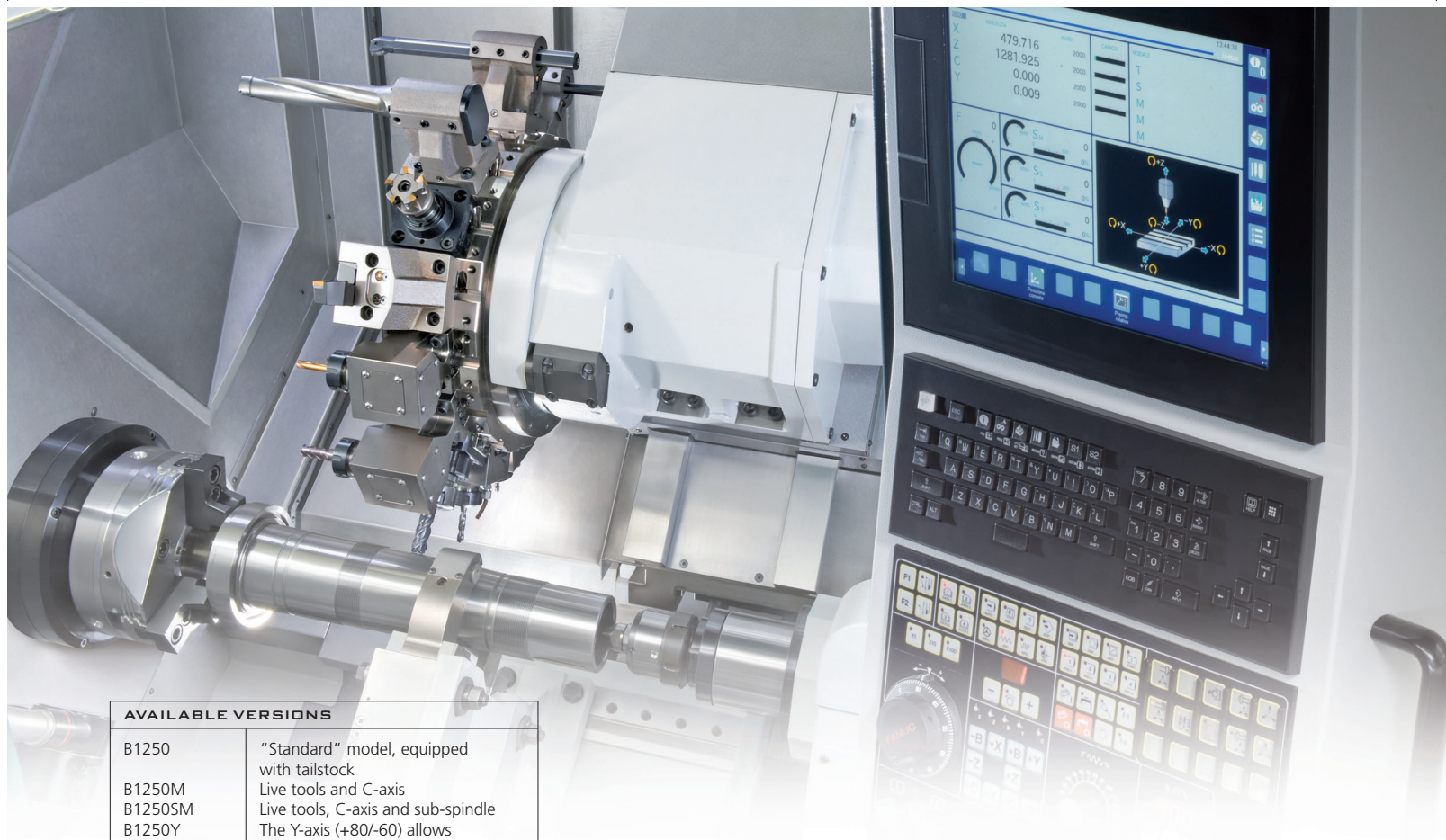
8



The B750 and B1250 machines are equipped with the new turret with a direct drive built-in motor and feature a sturdy cast-iron machine bed.

Particularly suitable for the machining of flanges and shafts with high chip removal, the B1250 features a long bed with a longitudinal stroke of 1310 mm, large bar capacity and a sturdy CNC automatic tailstock with a 115 mm hydraulic quill. The B1250 can accept the travelling steady-rest.





AVAILABLE VERSIONS

B1250	"Standard" model, equipped with tailstock
B1250M	Live tools and C-axis
B1250SM	Live tools, C-axis and sub-spindle
B1250Y	The Y-axis (+80/-60) allows to combine milling and turning operations of complex parts
B1250YS	All the advantages provided by the Y-axis and the sub-spindle

TECHNICAL SPECIFICATIONS		B1250
Max. bar capacity	mm	100/80/93-100
Max. turning diameter	mm	552/450/552
Max. machining length	mm	1195
Y-axis travel	mm	140
Main spindle: rotation speed		2800/3200/3000
Chuck diameter	mm	250/315/400
Motor power (50%)	kW	30/22/38
Sub-spindle: rotation speed	rpm	4500
Chuck diameter	mm	210/250
Motor power (50%)	kW	40
Number of tool stations		12/16 (12/16 all driven)
Live tools: speedrate	rpm	6000
Live tools: motor power	kW	17,5
Tailstock morse taper		CM4/CM5
Weight incl. swarf conveyor	kg	8400
Machine dimensions	cm	543x219x233h

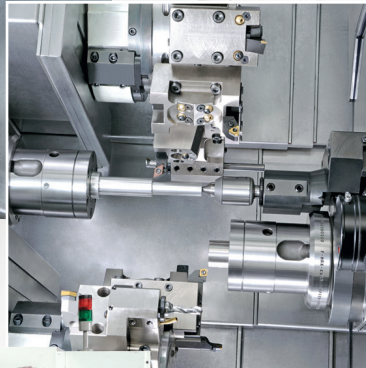
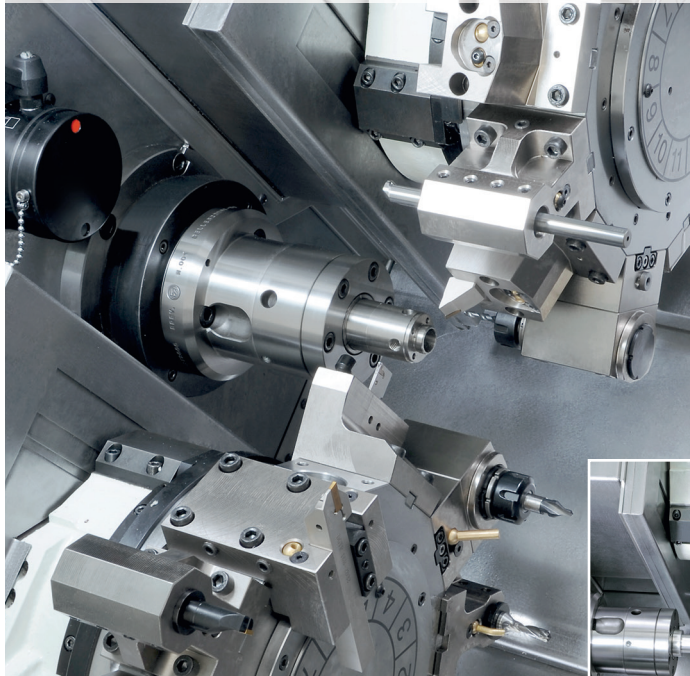




B438

BAR TURNING

10



Twin-turret and Twin-spindle CNC-lathe with fixed headstock, compact, versatile and quick for combined turning, milling and drilling of small-sized parts.

The B438Y2 has a very compact structure offering optimum use of available space in the workshop.

The sturdy cast-iron construction, the robust components such as the main bed, linear rails, turrets and spindles combined with powerful spindle motors (11 kW) and live tools (4,6 kW max.) will allow you to achieve significant results:

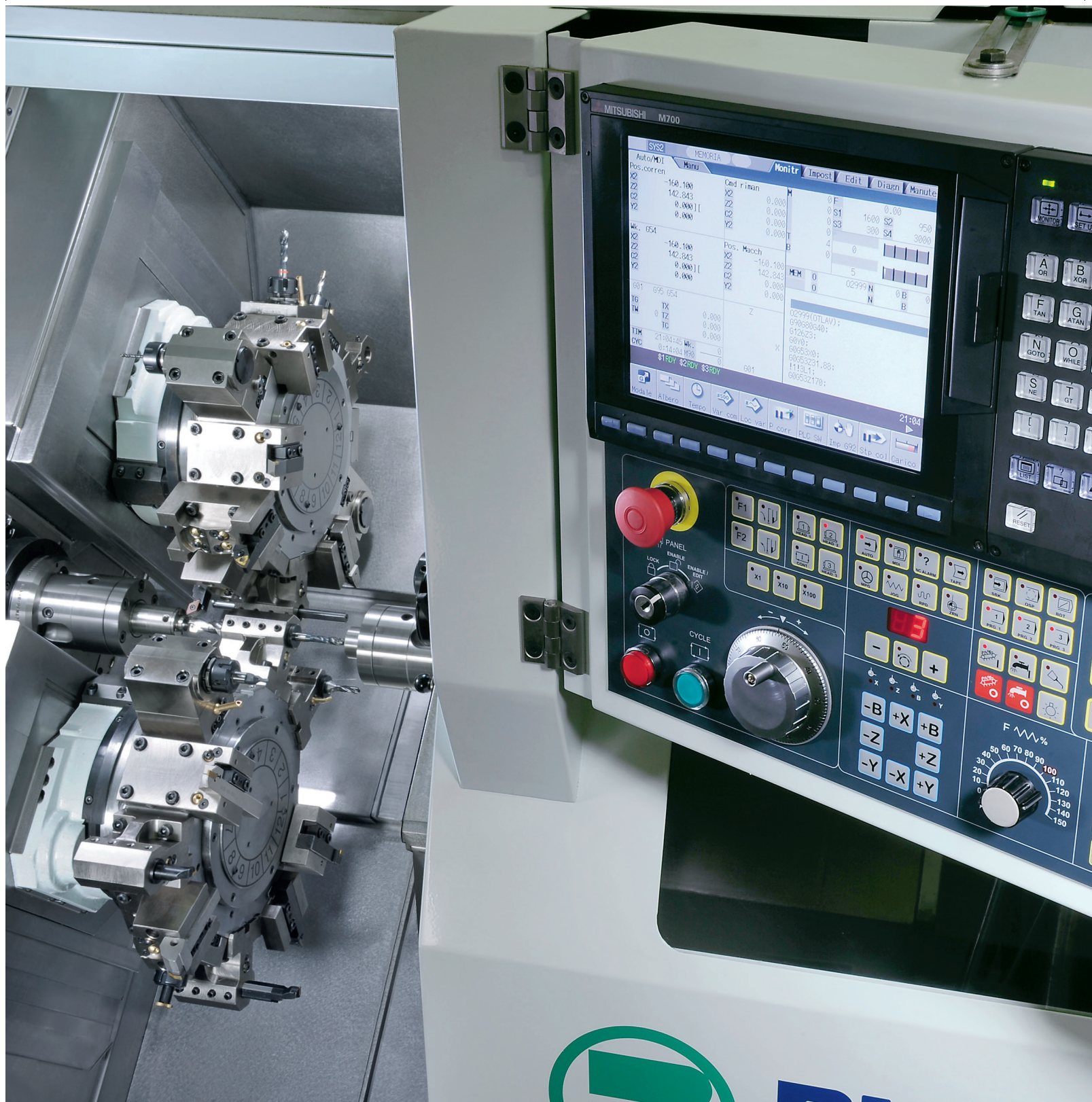
- optimal machining of all materials, especially tough alloys.
- reduction of cycle times and longer tool service life.
- perfect and efficient method of 'Chip' removal.
- ergonomics and easy access for setup and retooling operations.

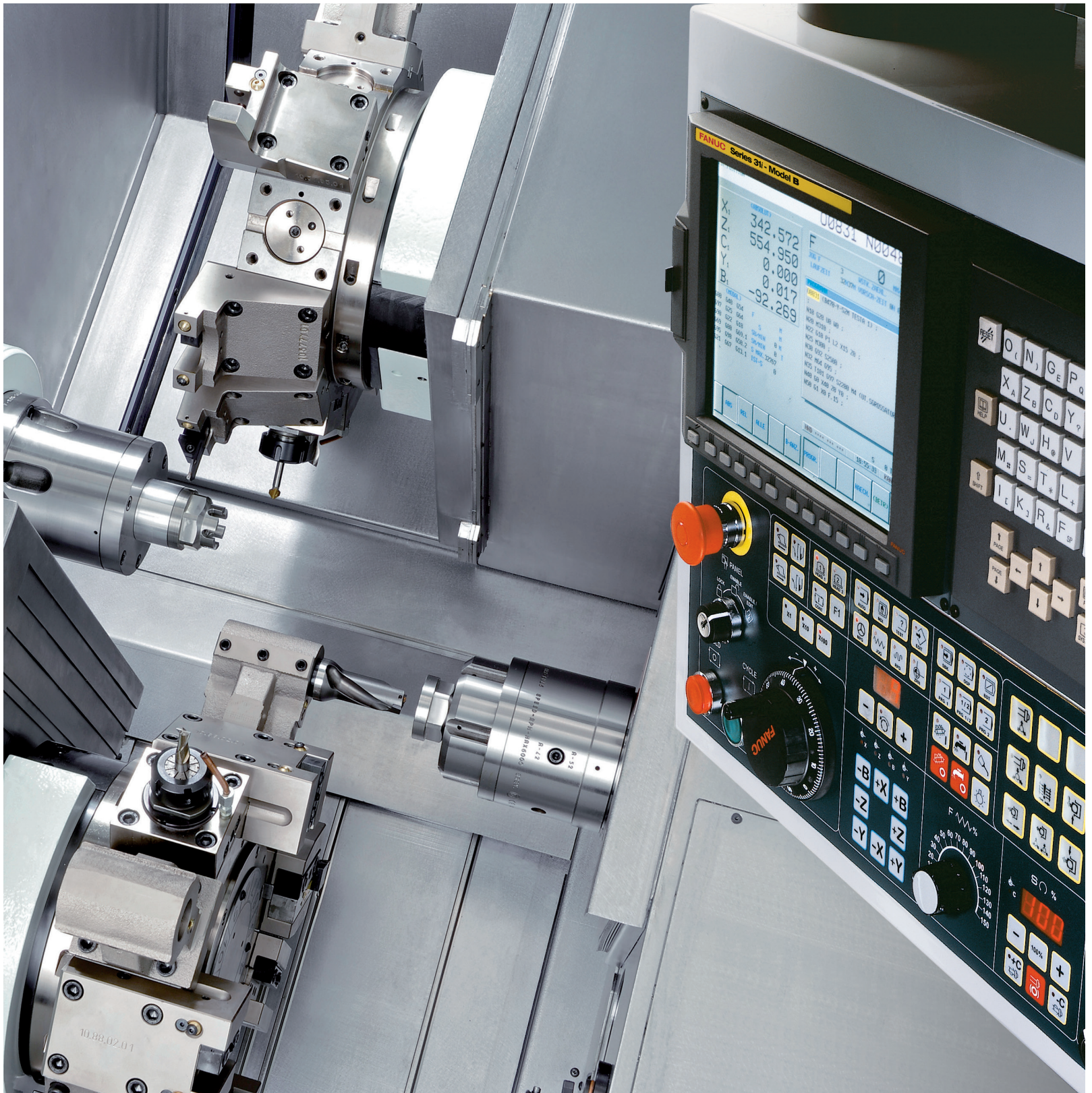


AVAILABLE VERSIONS

B438Y2	2 turrets equipped with live tooling, 2 spindles, 2 "C"-axes, 2 "Y"-axes on the upper and lower turrets.
--------	--

TECHNICAL SPECIFICATIONS		B438 Y2
Max. machining diameter	mm	38
Max. machining length	mm	100
Y-axis stroke	mm	50 (-25/+25)
Main spindle: speed range	rpm	20-7000
Motor power (50%)	kW	11 (7,5)
Sub-spindle: speed range	rpm	20-7000
Motor power (50%)	kW	11 (7,5)
Turrets		2
Number of tools on the turrets		12x2
Live tools: number of tools		12x2
Speed range	rpm	6000
Power (50%)	kW	4,6
CNC unit		MITSUBISHI M730
Machine weight with swarf conveyor	kg	4700
Dimensions	cm	368x151x199h





B 446 B 465 T2

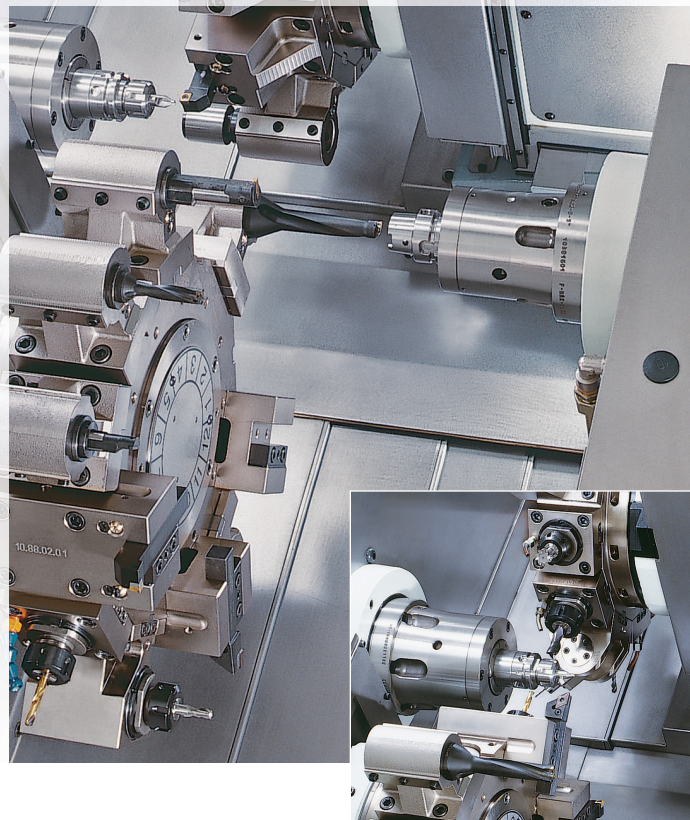
BAR TURNING



The range of four-axis turning and milling centres featuring two spindles can perform simultaneous machining on both sides of any workpiece. The two turrets can also perform simultaneous machining on the main spindle.

The layout of spindles and turrets, which may also be equipped with live tools and Y-axis, allows to reduce machining time and always get the finished parts.

The QUATTRO T2 turning centers are available in four configurations featuring 51 mm (B446) and 70 mm (B465) bar capacity.



AVAILABLE VERSIONS

B446 - B465 S2M	2 turrets, 2 spindles, 24 live tools, 2 C-axes
B446 - B465 Y	2 turrets, 2 spindles, 24 live tools, 2 C-axes, Y-axis on the upper turret
B446 - B465 Y2	2 turrets, 2 spindles, 24 live tools, 2 C-axes, 2 Y-axes on the upper turret and lower turret

TECHNICAL SPECIFICATIONS		B446 T2	B465 T2
Max. bar capacity	mm	51	70
Max. machining diameter	mm	200	200
Max. machining length	mm	350	350
Y-axis travel	mm	90	90
Main spindle: rotation speed	rpm	5000	4000
Chuck diameter	mm	165-210	165-210
Motor power (50%)	kW	15	26
Sub-spindle: rotation speed	rpm	5000	5000
Chuck diameter	mm	165	165
Motor power (50%)	kW	11	11
No. of tool stations	nr	24 (all driven)	24 (all driven)
Live tools: speedrate	rpm	4000	4000
Live tools: motor power	kW	3,7	3,7
Weight incl. swarf conveyor	kg	7900	8100
Machine dimensions	cm	453x211x220h	

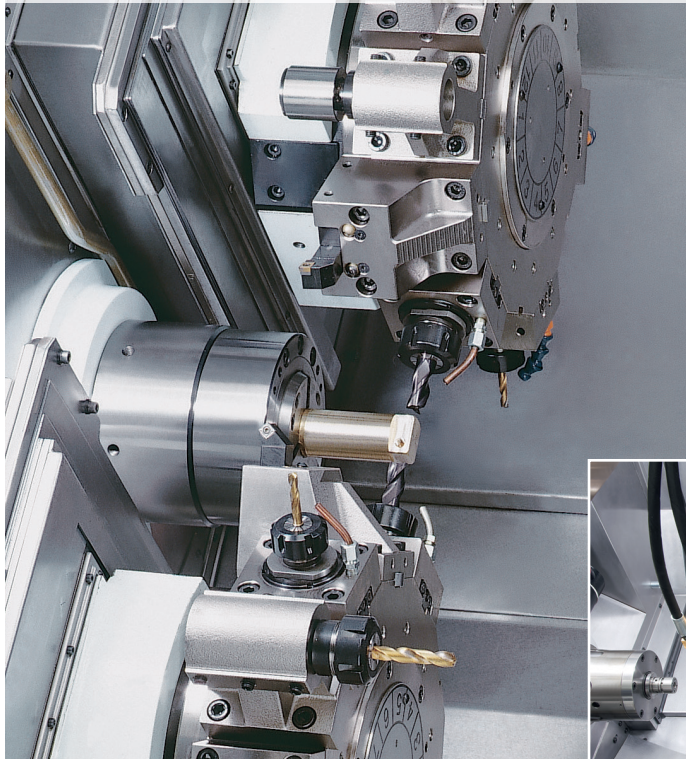




B446 B465 T3

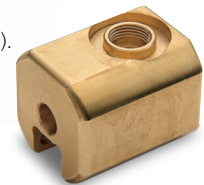
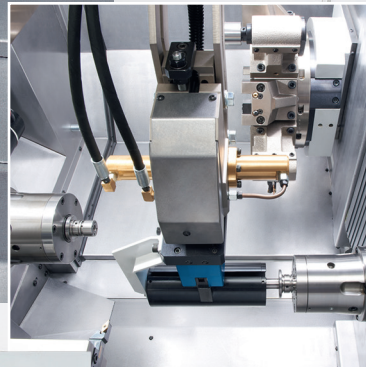
BAR TURNING

14



The 446/465T3 range of machines equipped with three turrets and thirteen axes is the top of the range developed by Biglia in the field of high-performance twin-spindle bar turning centres. The three turrets can perform simultaneous machining using three tools at the same time, thus reducing cycle time drastically. The combination of 36 live tool stations, 3 Y-axes, 2 C-axes and the possibility to accept up to 50 tools enables the complete machining of complex parts with the highest flexibility.

The QUATTRO T3 turning centers are available in four configurations 51 mm (B446) and 70 mm (B465).



AVAILABLE VERSIONS

B446-465 Y2	- 2 spindles, 2 "C" axes - 3 motor-driven turrets
B446-465 Y3	- 2 Y-axes - 2 spindles, 2 "C" axes - 3 motor-driven turrets - 2 Y-axes

TECHNICAL SPECIFICATIONS

		B446 T3	B465 T3
Max bar capacity	mm	51	70
Max machining diameter	mm	230	230
Y-axis travel	mm	90	90
Main spindle: rotation	rpm	5000	4000
Motor power (50%)	kW	15	26
Sub-spindle: rotation	rpm	5000	5000
Motor power (50%)	kW	11	11
Number of turret stations	No.	12x3	12x3
Number of live tools	No.	12x3	12x3
Max. speed	rpm	4000	4000
Motor power (50%)	kW	3,7	3,7
Weight incl. swarf conveyor	kg	8200	8400
Machine dimensions	cm	453x211x220h	





OFFICINE E. BIGLIA & C. SpA
I-14045 INCISA SCAPACCINO (AT)
Tel.: +39 0141 7831 • Fax: +39 0141 783327
www.bigliaspa.it

AD17-00110ING • 10/2021

THE SPECIFICATIONS CONTAINED HEREIN ARE NOT BINDING.

Designed by: © **accentus**